

Approved
Y4R 2026-5

BULLETIN



921-0000010B OM
Operation Manual

Q-ty of sheets

Sheet

GROUND: customer request

Bulletin Y4R 2026-5	TRACTOR MODEL	921/921.2/921.3/921.4
------------------------	---------------	-----------------------

Annotation

This operation bulletin provides the following information:

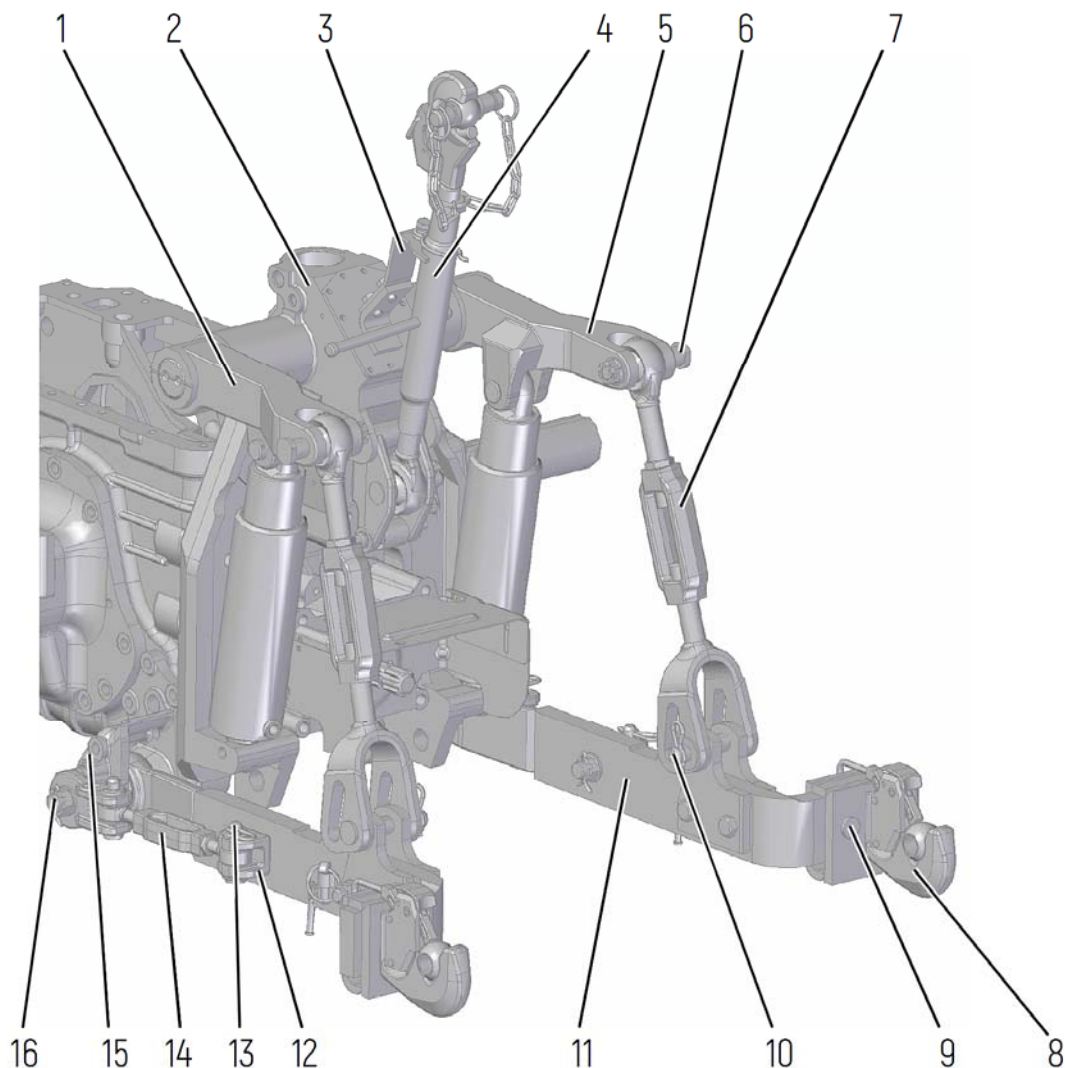
- introduction of a rear lift linkage (RLL) variant 921-4605010-A, which can be installed in place of the RLLs presented in subsection 3.12 "Rear lift linkage" of document 921-0000010B OM;
- additional operating rules for the front lift linkage (FLL) when performing transport operations and road travel.

Note – This operation bulletin provides information only for the original buckles and lifting rods installed on the RLL 921-4605010-A. The design and adjustment of the lower and upper links of the RLL 921-4605010-A are provided in document 921-0000010B OM.

Content of changes

Section 3 "Description and Operation of Tractor Components", subsection 3.12 "Rear lift linkage", clause 3.12.1 "General Information", add the following information:

Upon customer order, the tractor may be equipped with the RLL shown in Figure 3.12.5.a.

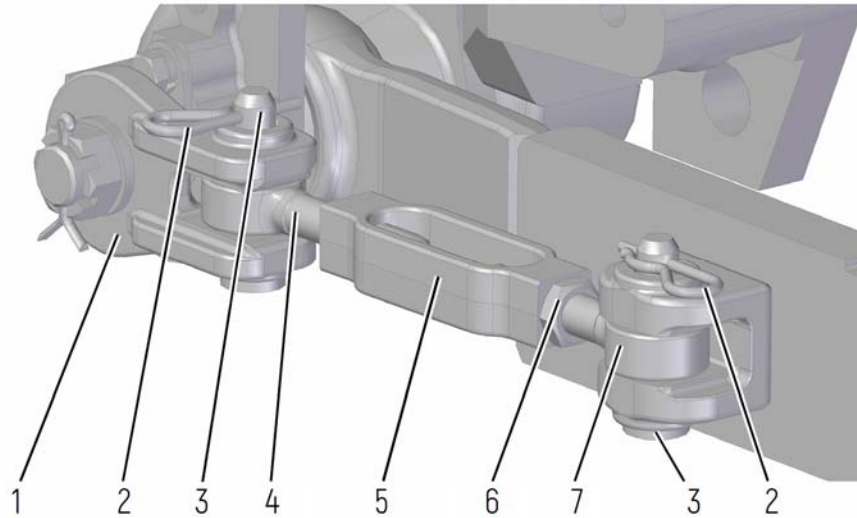


1 – left hydraulic lift lever; 2 – hydraulic lift; 3 – bracket; 4 – upper link; 5 – right hydraulic lift lever; 6 – pin; 7 – lifting rod; 8 – end piece with grip; 9 – pin; 10 – pin; 11 – lower link; 12 – eyelet; 13 – pin; 14 – buckle; 15 – bracket; 16 – pin.

Figure 3.12.5.a – Rear lift linkage

Lifting rods 7 (Figure 3.12.5.a) are connected to levers 1 and 5 of hydraulic lift 2 and lower links 11 using pins 6 and 10. Brackets 15 are fixed on the rear axle housing. The front ends of lower links 11 and the buckle brackets are attached to these brackets using pins 16. The rear ends of buckles 14 are secured in eyelets 12 of lower links 11 with pins 13. End pieces with grips 8 are installed on the curved ends of lower links 11 using pins 9. The upper link 4 is attached to the bracket on the lift cylinder 2. In the non-operating position, the upper link 4 is secured in bracket 3. The buckles provide locking or adjustment of the lateral swinging of the lower links 11 within ± 50 mm in the working and transport positions of the RLL.

The RLL is equipped with a buckle as shown in Figure 3.12.5.b.



1 – bracket; 2 – cotter pin; 3 – pin; 4 – screw; 5 – buckle; 6 – lock nut; 7 – screw.

Figure 3.12.5.b – Buckle

During tractor operation the buckles shall be always locked in one of the three positions:

- partial locking of the buckles in working position;
- full locking of the buckles in working position;
- full locking of the buckles in transport position.

Partial locking of the buckles in working position shall be carried out as follows:

- attach the implement to the tractor and slightly raise it so that it does not touch the ground;
- loosen lock nuts 6 (Figure 3.12.5.b);
- position the implement symmetrically with the longitudinal axis of the tractor;
- to allow lateral swinging of the implement to each side, adjust the length of buckles 14 (Figure 3.12.5.a) by rotating buckles 5 (Figure 3.12.5.b). The maximum lateral swinging of the lower links 11 (Figure 3.12.5.a) to each side is 50 mm;
- tighten lock nuts 6 (Figure 3.12.5.b).

Full locking of the buckles in working position shall be carried out as follows:

- attach the implement to the tractor and slightly raise it so that it does not touch the ground;
- loosen lock nuts 6 (Figure 3.12.5.b);
- position the implement symmetrically with the longitudinal axis of the tractor;
- shorten the length of buckles 14 (Figure 3.12.5.a) by rotating buckles 5 (Figure 3.12.5.b). Check the lateral swinging of the implement, which shall not exceed 20 mm to each side;
- tighten lock nuts 6.

Full locking of the buckles in transport position shall be carried out as follows:

- if the buckles were partially locked in working position, then move the implement to transport position and shorten the length of buckles 14 (Figure 3.12.5.a) by rotating buckles 5 (Figure 3.12.5.b). Check the lateral swinging of the implement, which shall not exceed 20 mm to each side. If necessary, shorten the length of the buckles further;
- if the buckles were fully locked in working position, when the implement is moved to transport position the buckles become automatically locked.

WARNING: DURING TRANSPORT OPERATIONS AND ROAD TRAVEL, THE "FULL LOCKING OF THE BUCKLES" CONFIGURATION SHALL BE USED!

WARNING: WHEN OPERATING THE TRACTOR FOR AGRICULTURAL WORK WITH AN ATTACHED IMPLEMENT, THE "PARTIAL LOCKING OF THE BUCKLES" OR "FULL LOCKING OF THE BUCKLES" CONFIGURATION SHALL BE USED, IN ACCORDANCE WITH THE INSTRUCTIONS IN THE OPERATION MANUAL FOR THE ATTACHED IMPLEMENT!

Section 3 "Description and Operation of Tractor Components", subsection 3.12 "Rear lift linkage", clause 3.12.2.1 "Lifting Rod", add the following information:

- When lifting rods 7 (Figure 3.12.5.a) are installed, their length shall be adjusted as follows:
- unscrew lock nut 2 (Figure 3.12.6.a);
- rotate turnbuckle 3 clockwise or counterclockwise to change the length of the lifting rod;
- having adjusted the length of the lifting rod, tighten lock nut 2.

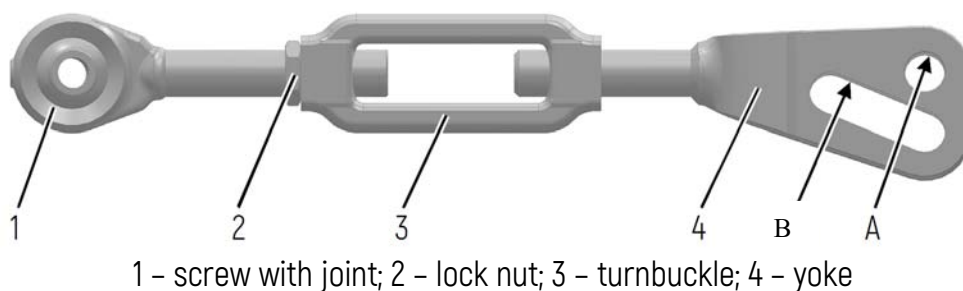


Figure 3.12.6.a – Lifting rod

The length of the lifting rods is adjustable from 490 to 580 mm. In ex-works condition (as delivered from the factory) the lifting rods are adjusted to a length of 540 mm. To follow the contour of the cultivated field when working with wide-span machines (implements) and to avoid damage to the RLL components, connect lifting rods 7 to lower links 11 (Figure 3.12.5.a) through slots B (Figure 3.12.6.a), unless otherwise stated in the operation manual of the agricultural machine or implement coupled.

IT IS FORBIDDEN TO PERFORM TRANSPORT OPERATIONS AND ROAD TRAVEL IF THE LIFTING RODS ARE CONNECTED TO THE LOWER LINKS THROUGH SLOTS B.

If it is necessary to perform a road trip with an attached wide-span machine (implement), the lifting rods shall be connected to the lower links through hole A.

Section 3 "Description and Operation of Tractor Components", subsection 3.13 "Front lift linkage", clause 3.13.1 "General Information", add the following information:

IT IS FORBIDDEN TO PERFORM TRANSPORT OPERATIONS AND ROAD TRAVEL WHEN THE FRONT LIFT LINKAGE (FLL) IS SET TO THE POSITION FOR OPERATION WITH WIDE-SPAN AGRICULTURAL IMPLEMENTS.

If it is necessary to perform a road trip with an attached wide-span agricultural implement, reposition pins 14 (Figure 3.13.1) into hole 15.